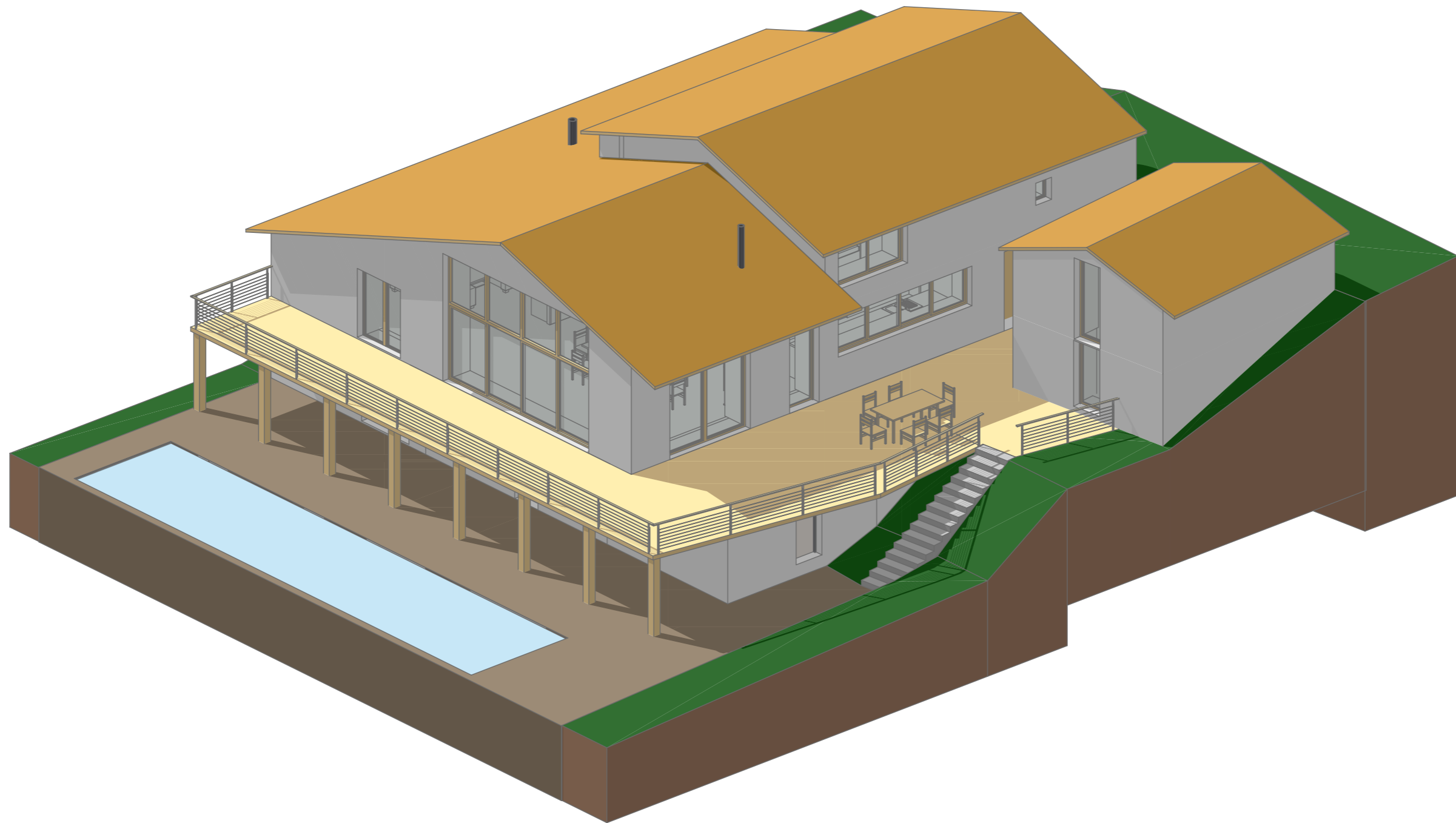
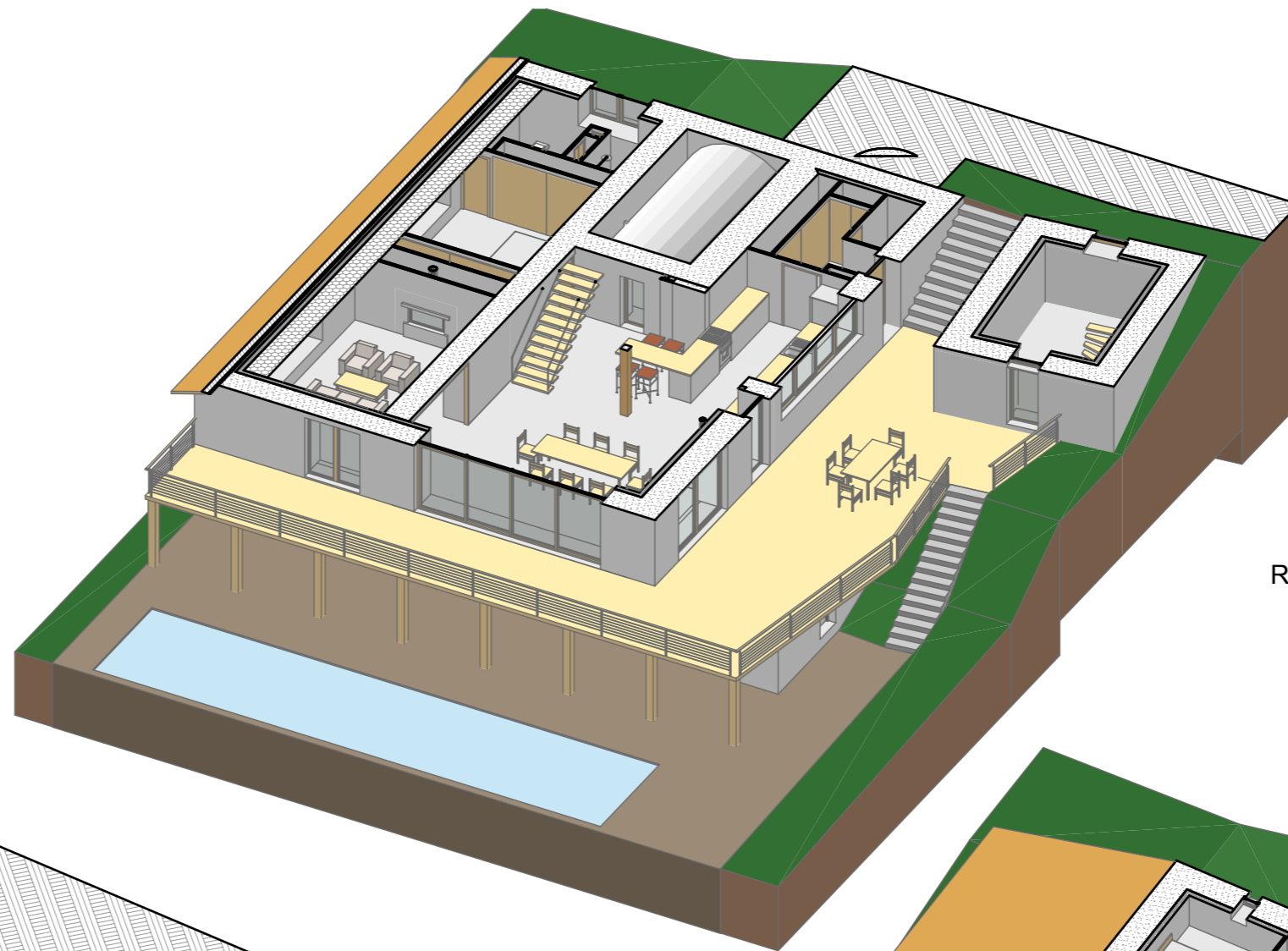


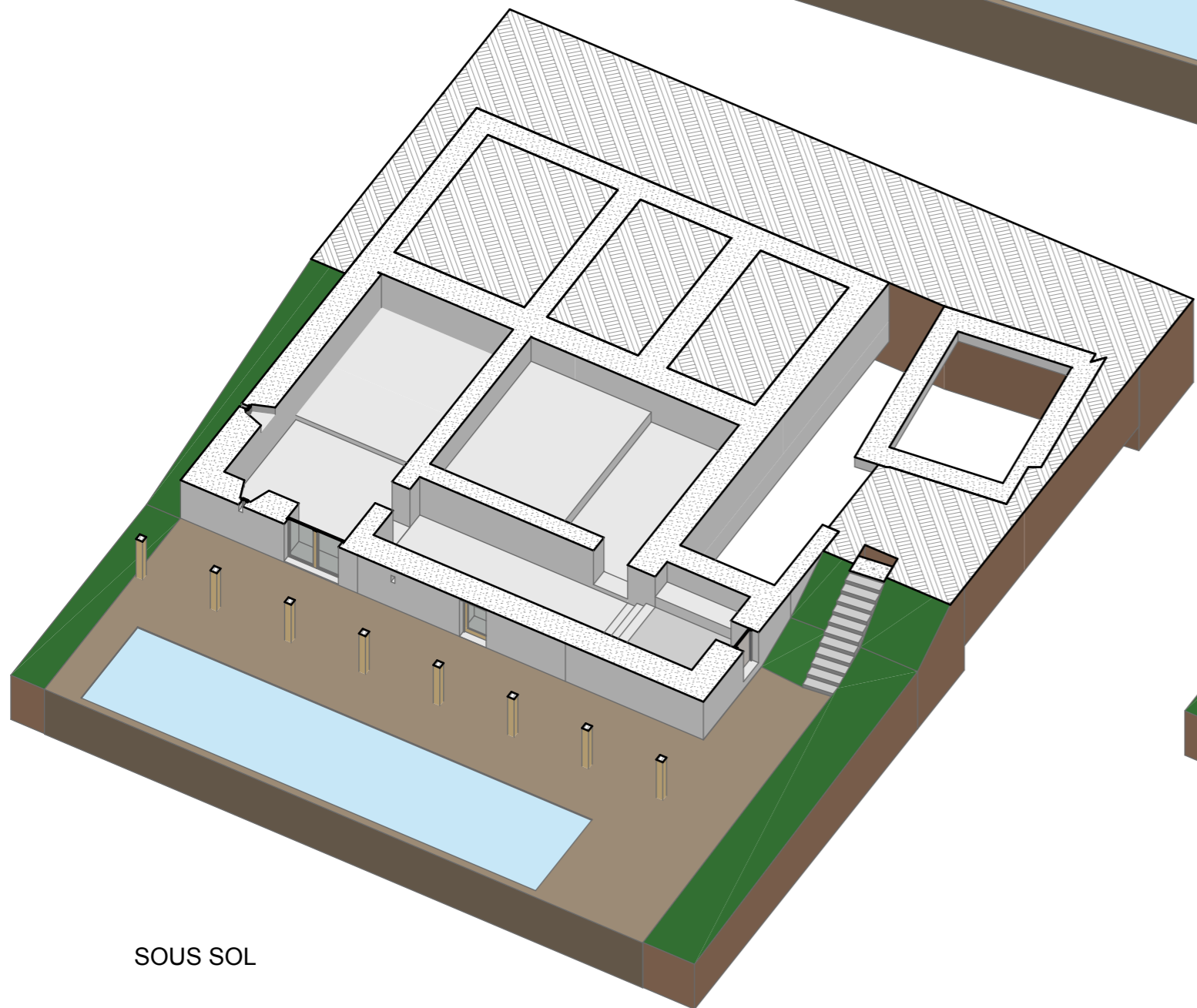
**rénovation-transformation d'un ensemble bâti en pierres,
lieu-dit: Chamblard, 07270 Saint Basile**



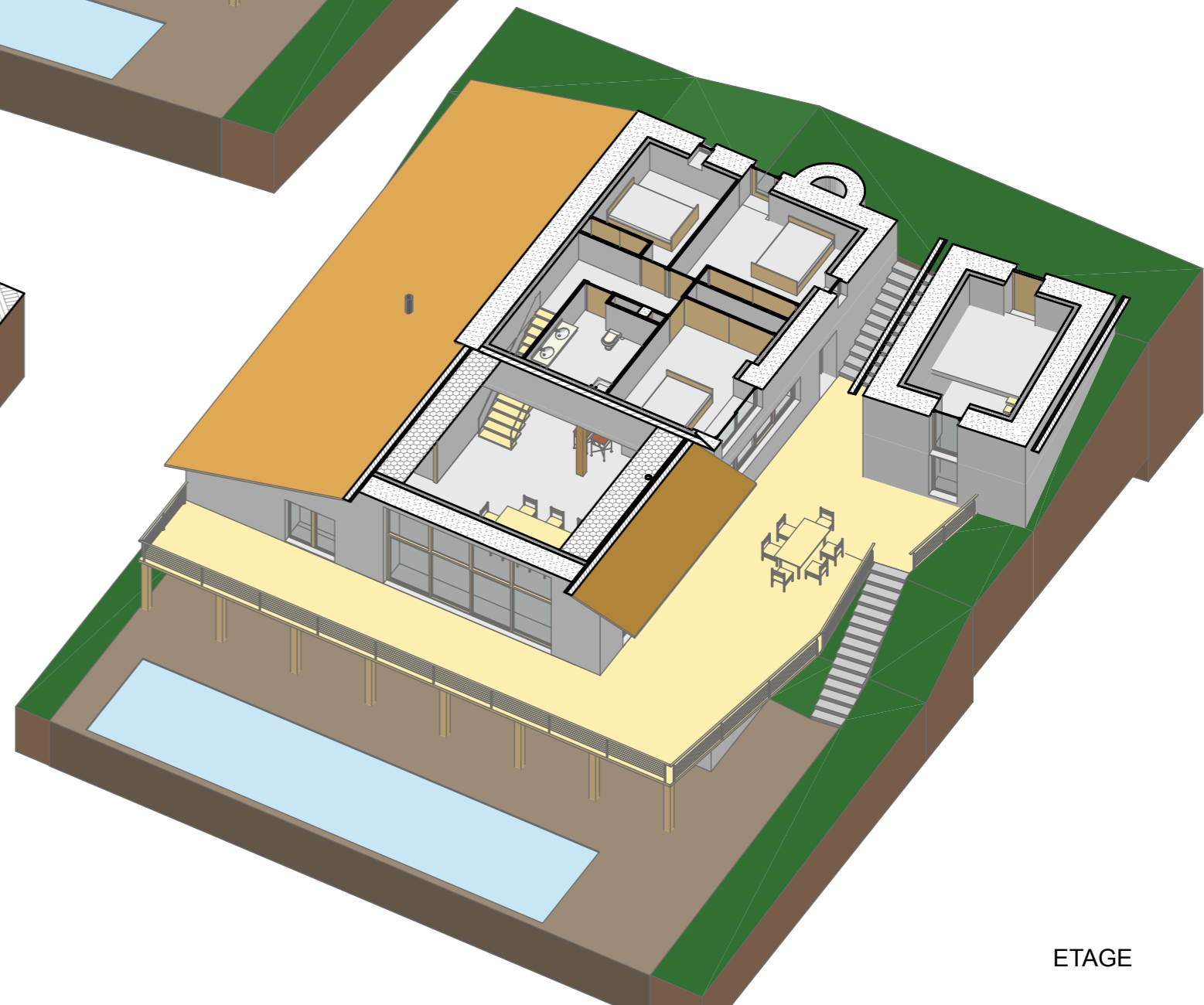
AXONOMETRIE D ENSEMBLE



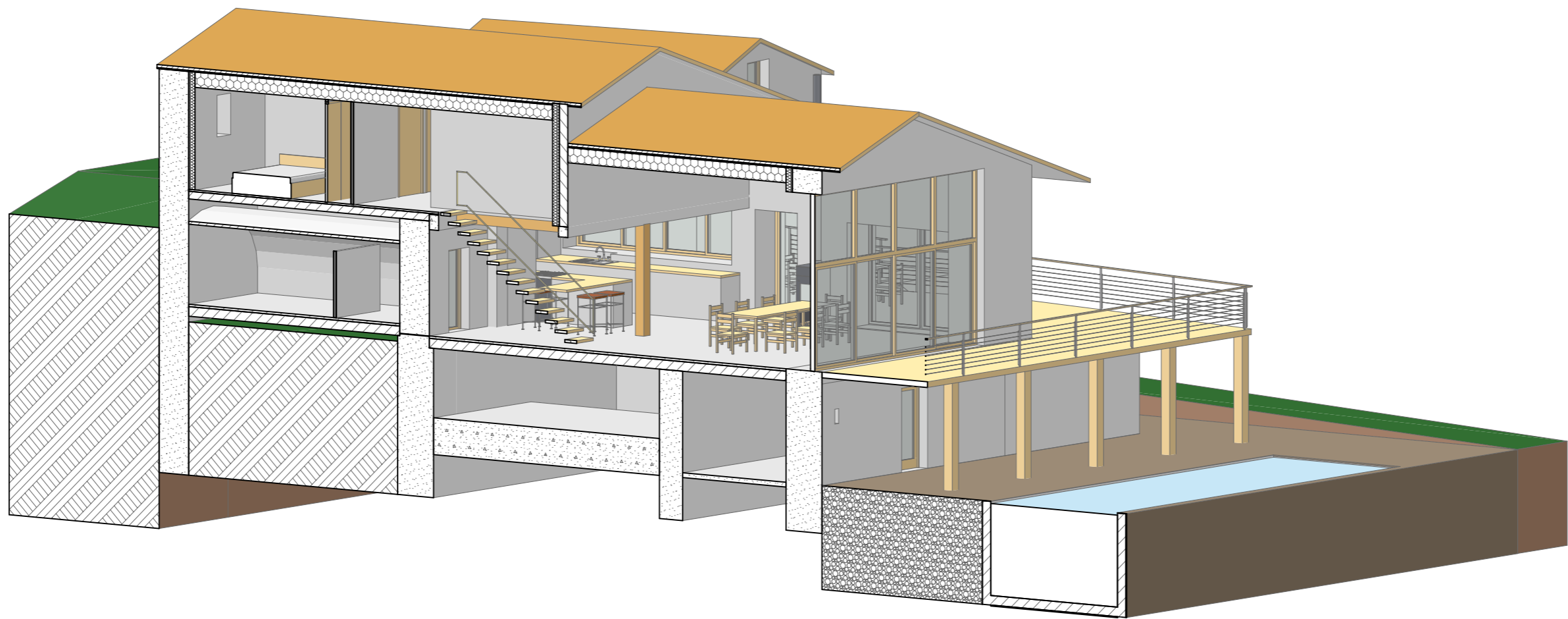
RDC

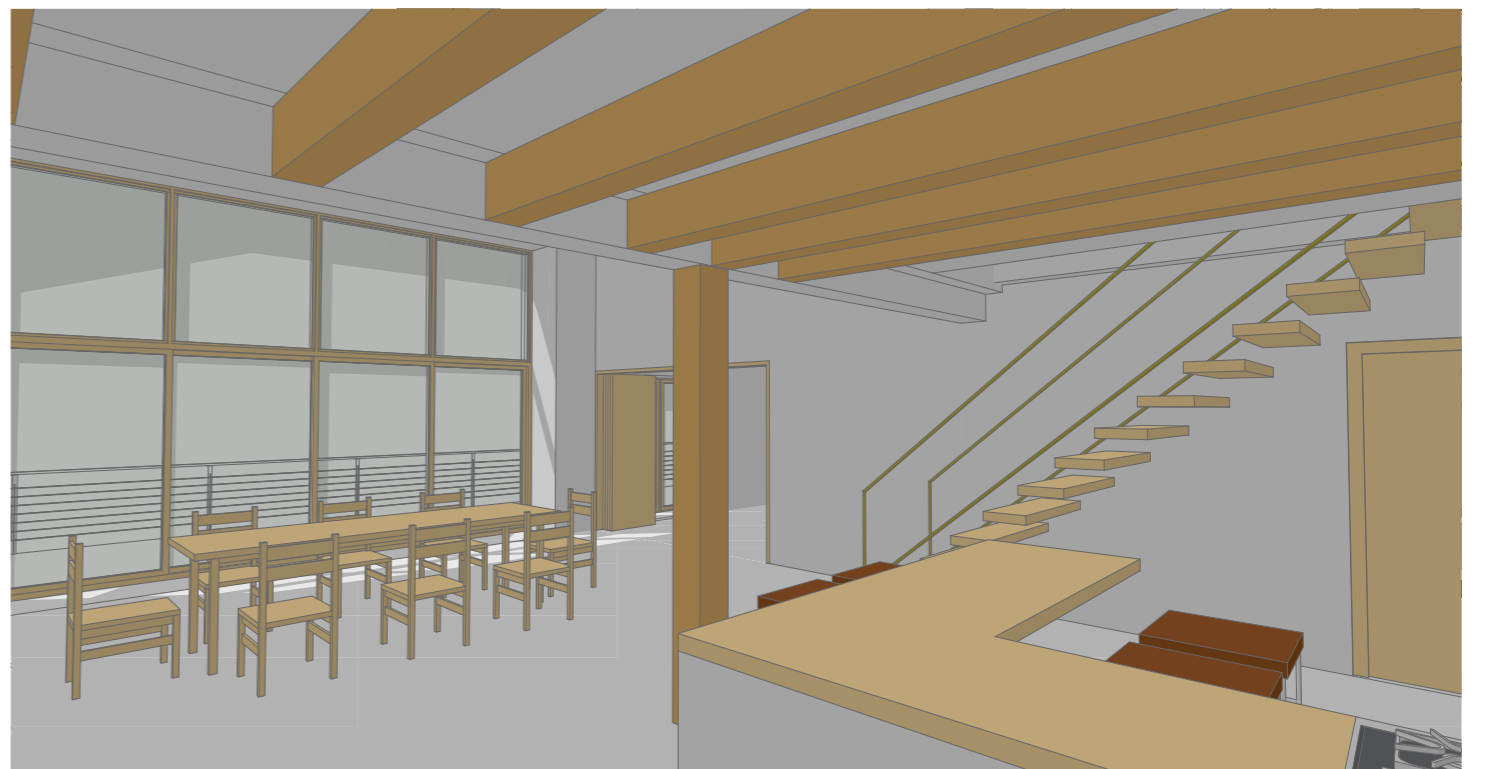
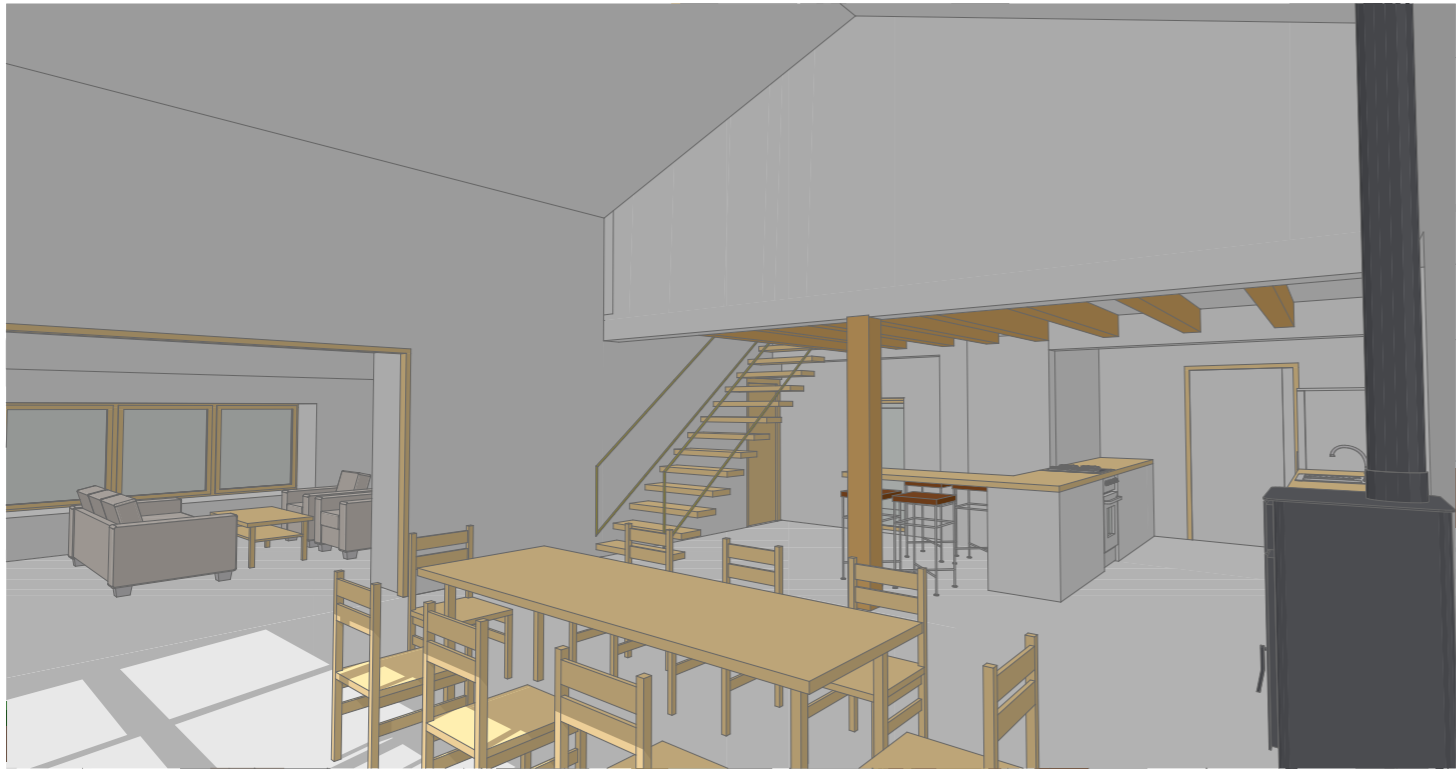
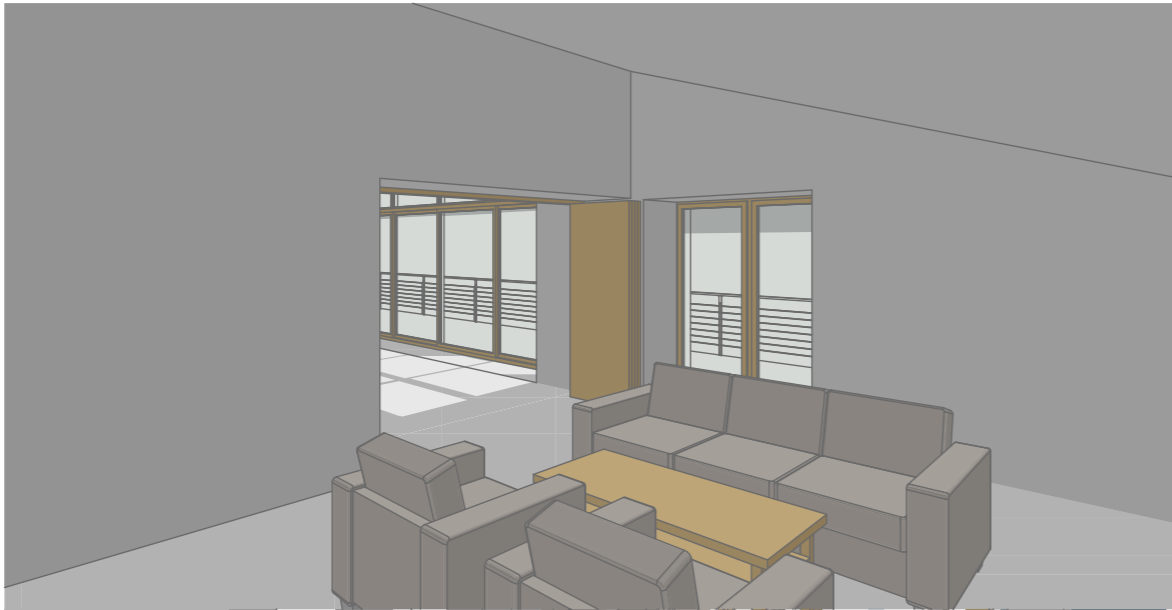


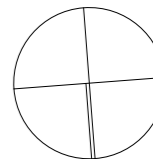
SOUS SOL



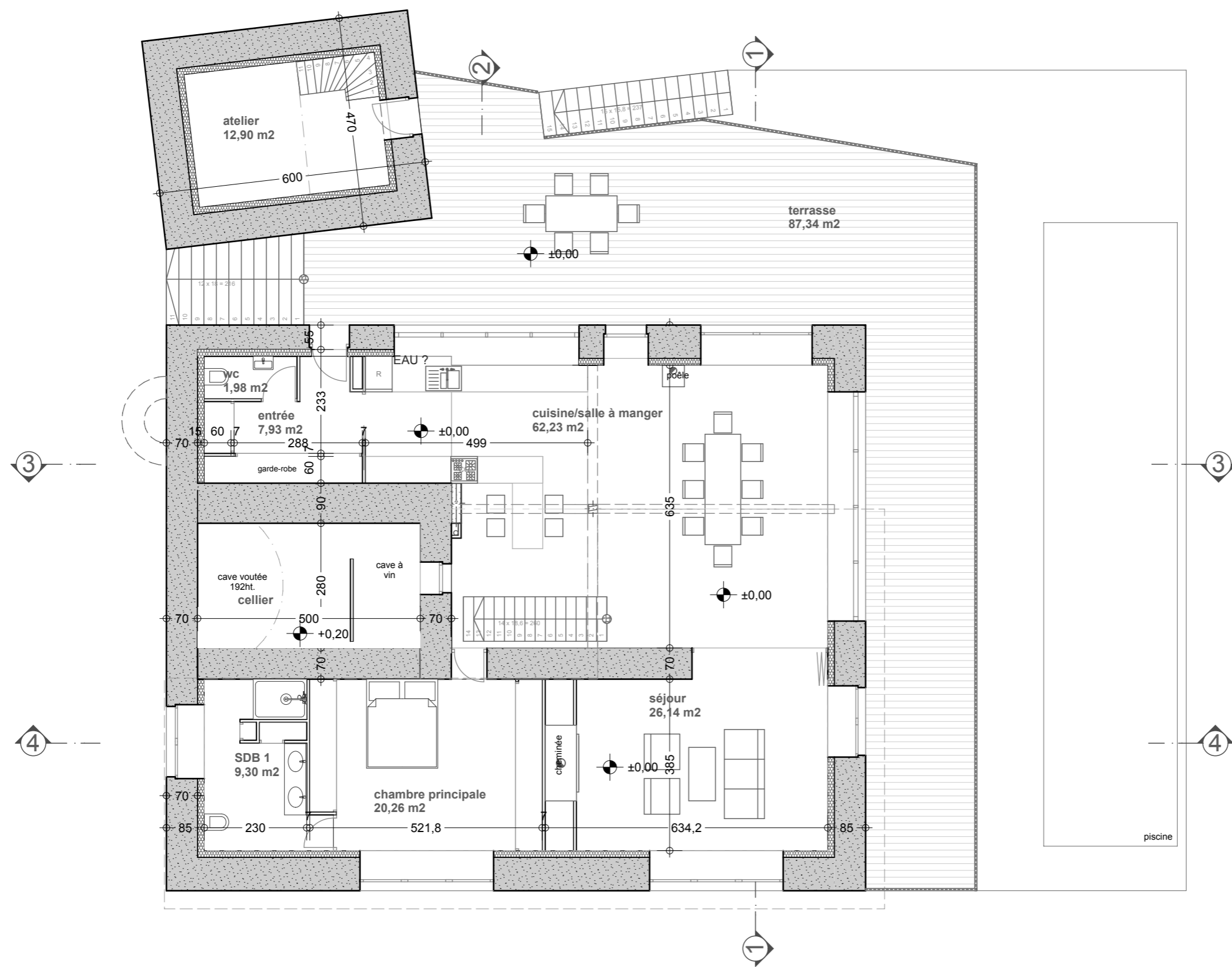
ETAGE







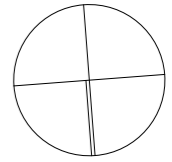
N



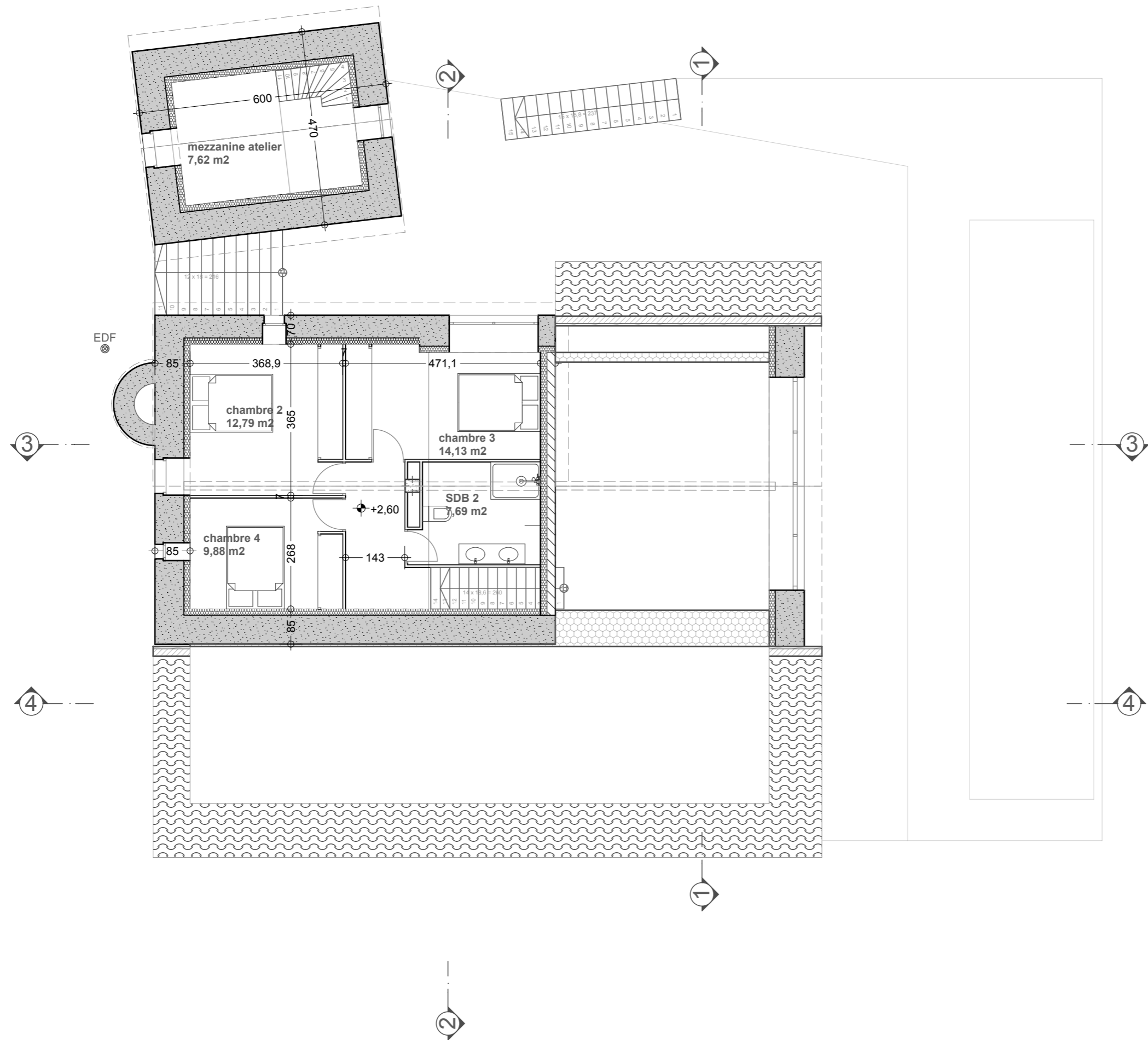
RC : hauteurs des alèges référencées au niv. +0.00

Niveau +/- 0

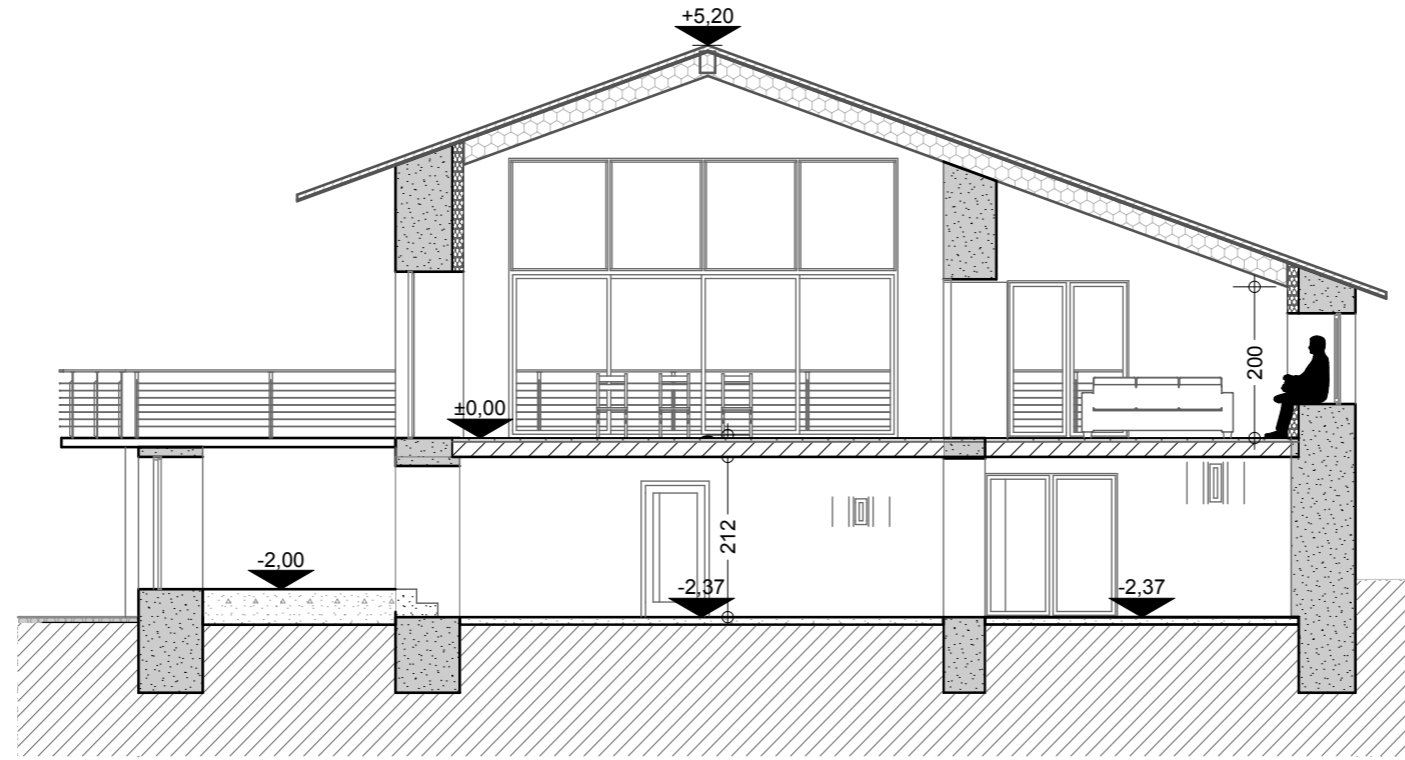
Projet - 1/100e



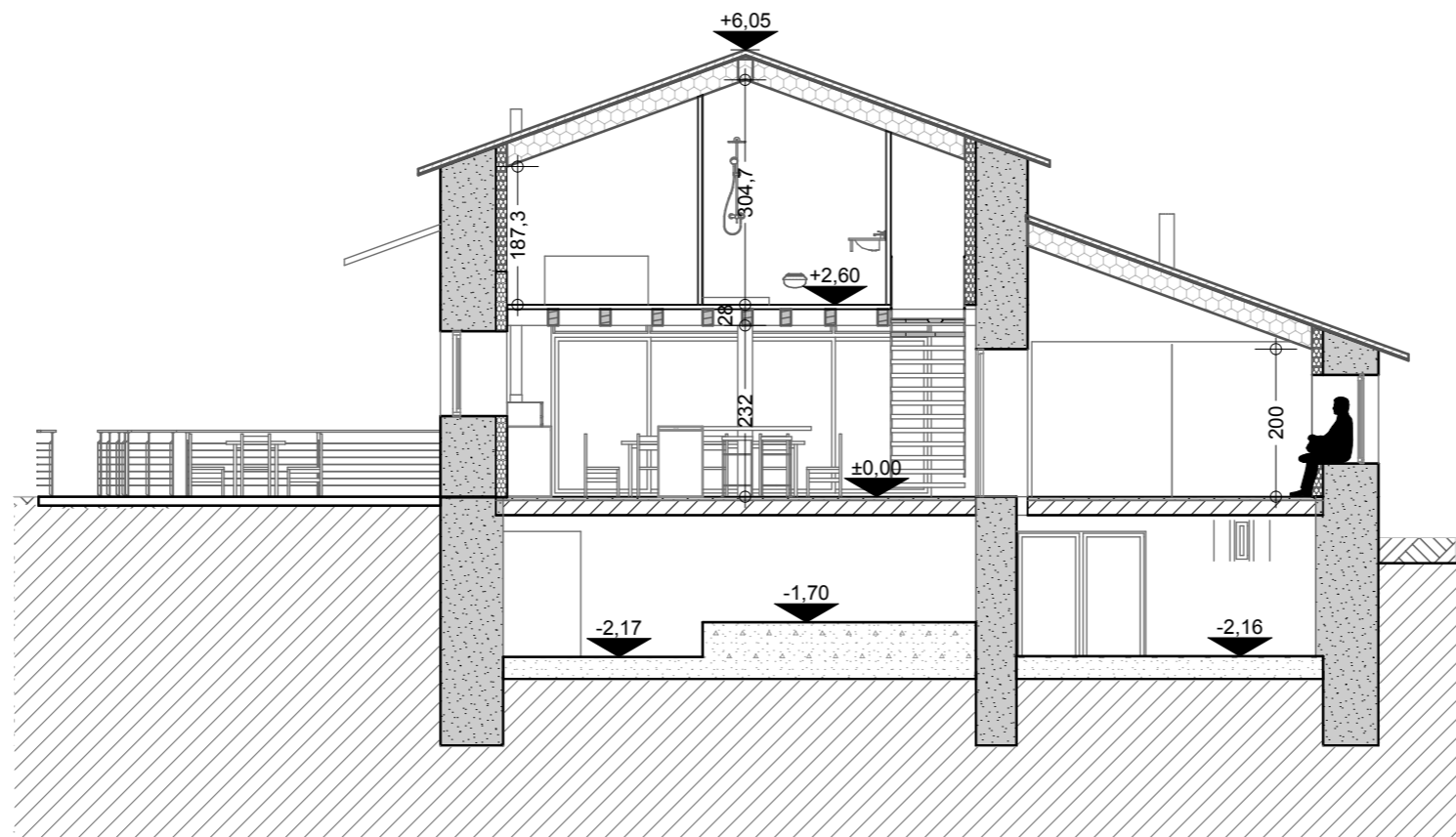
N



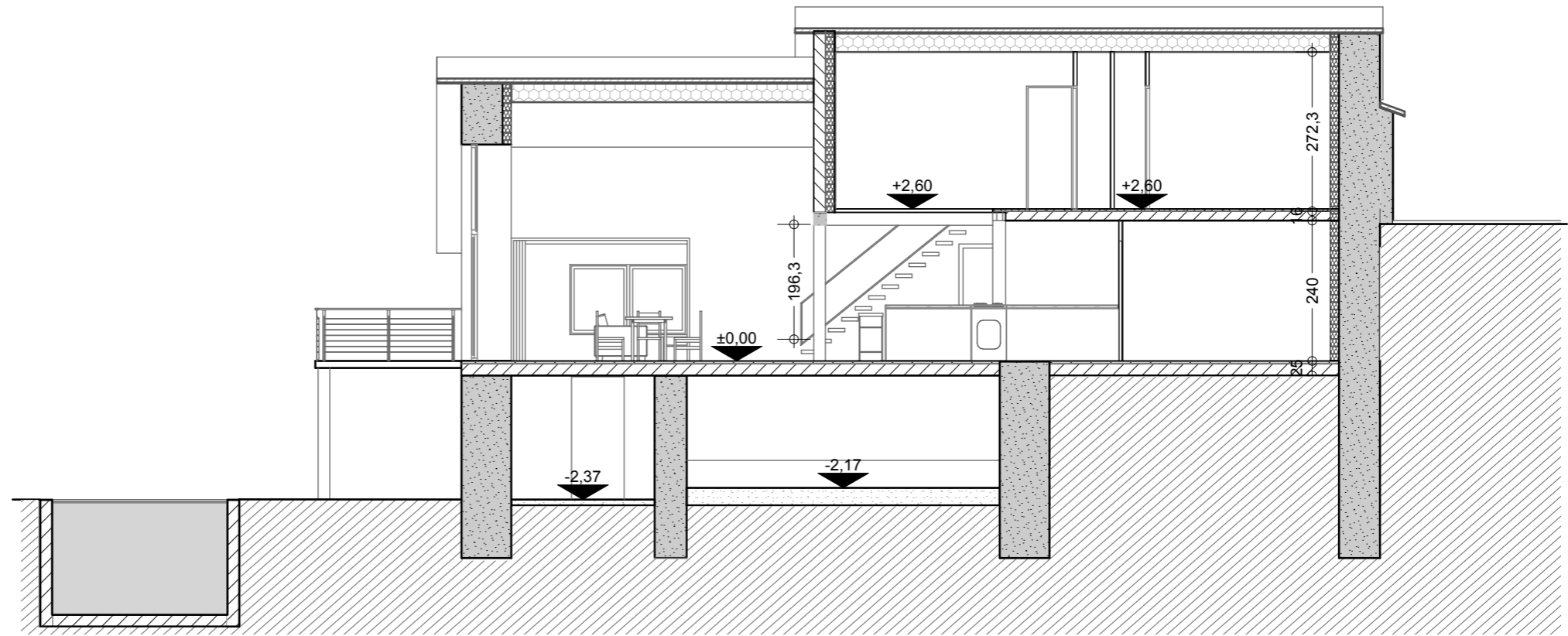
Niveau + 1
Projet - 1/100e



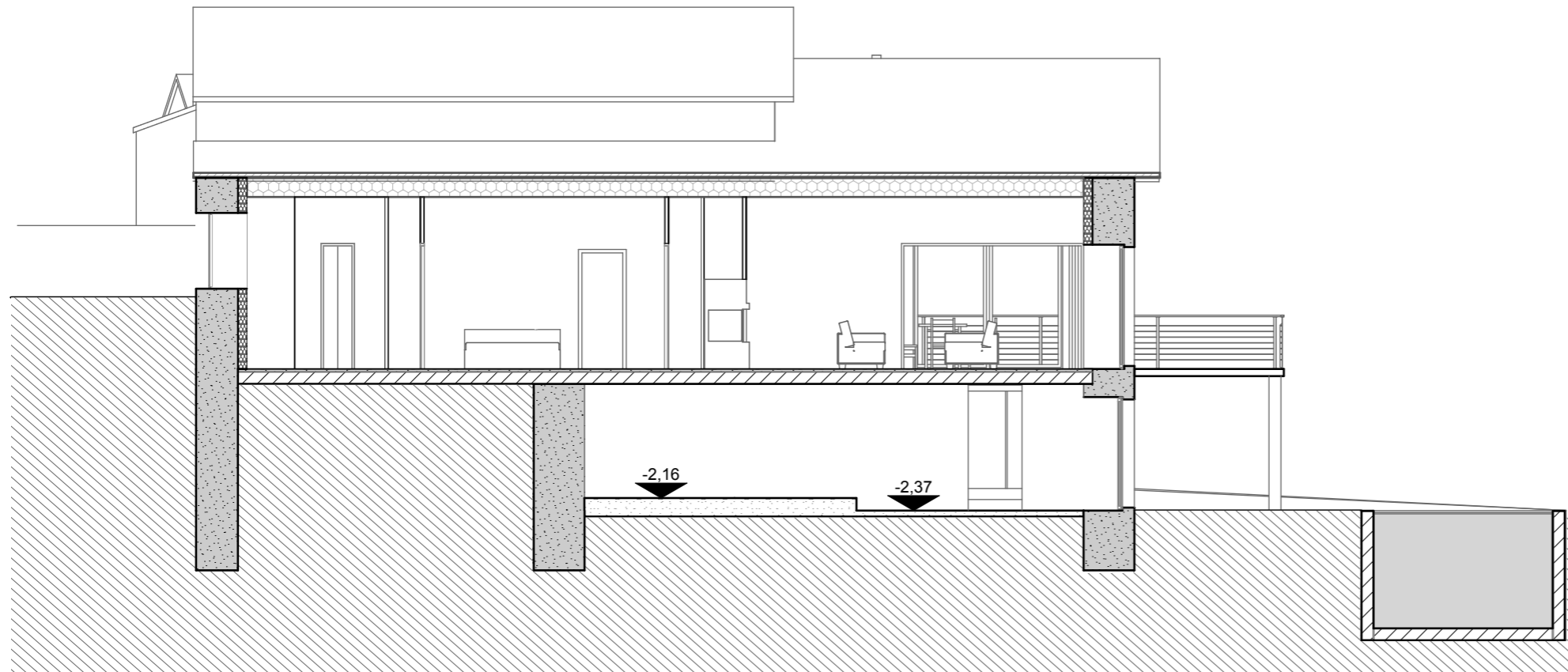
1



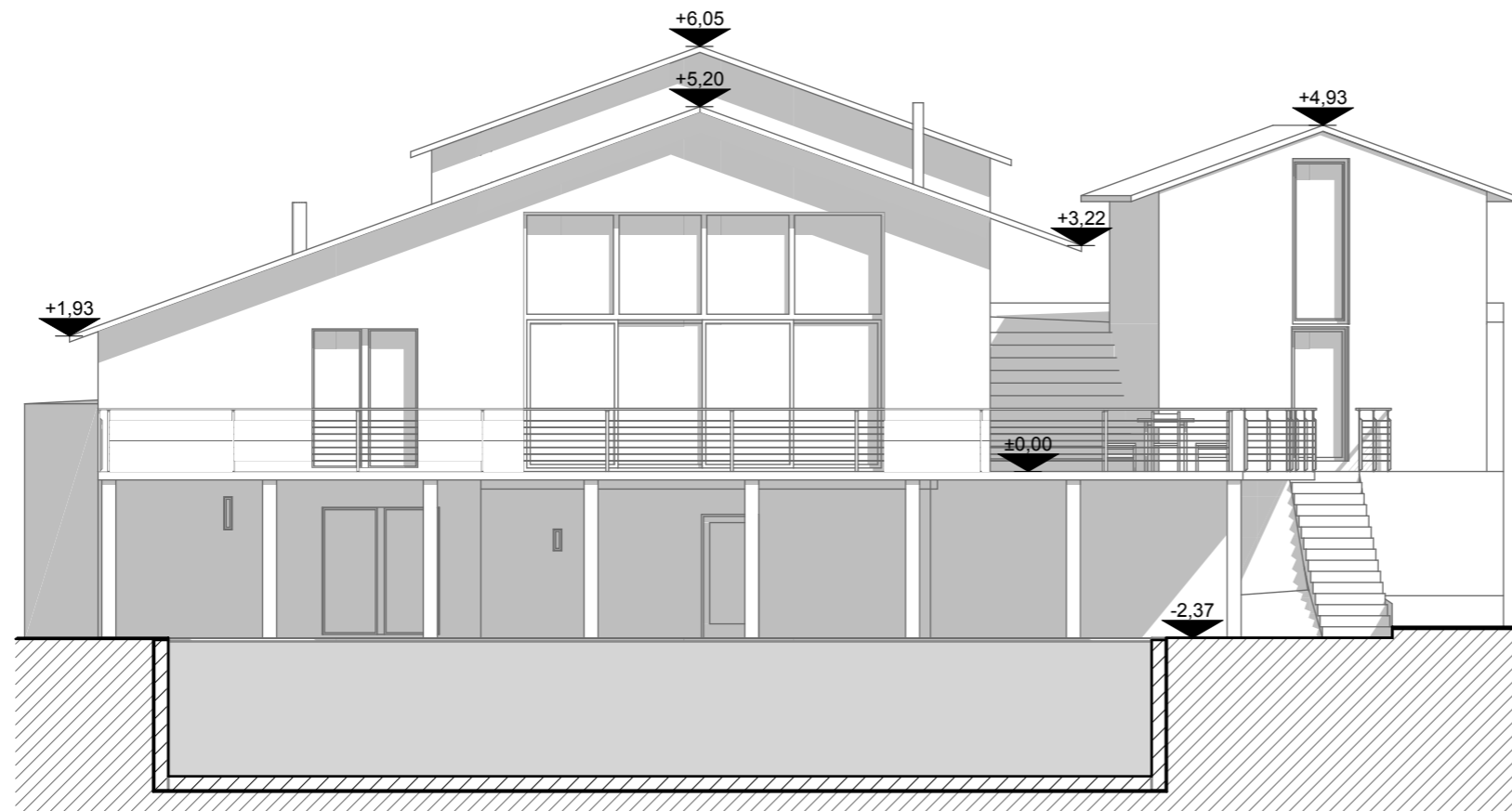
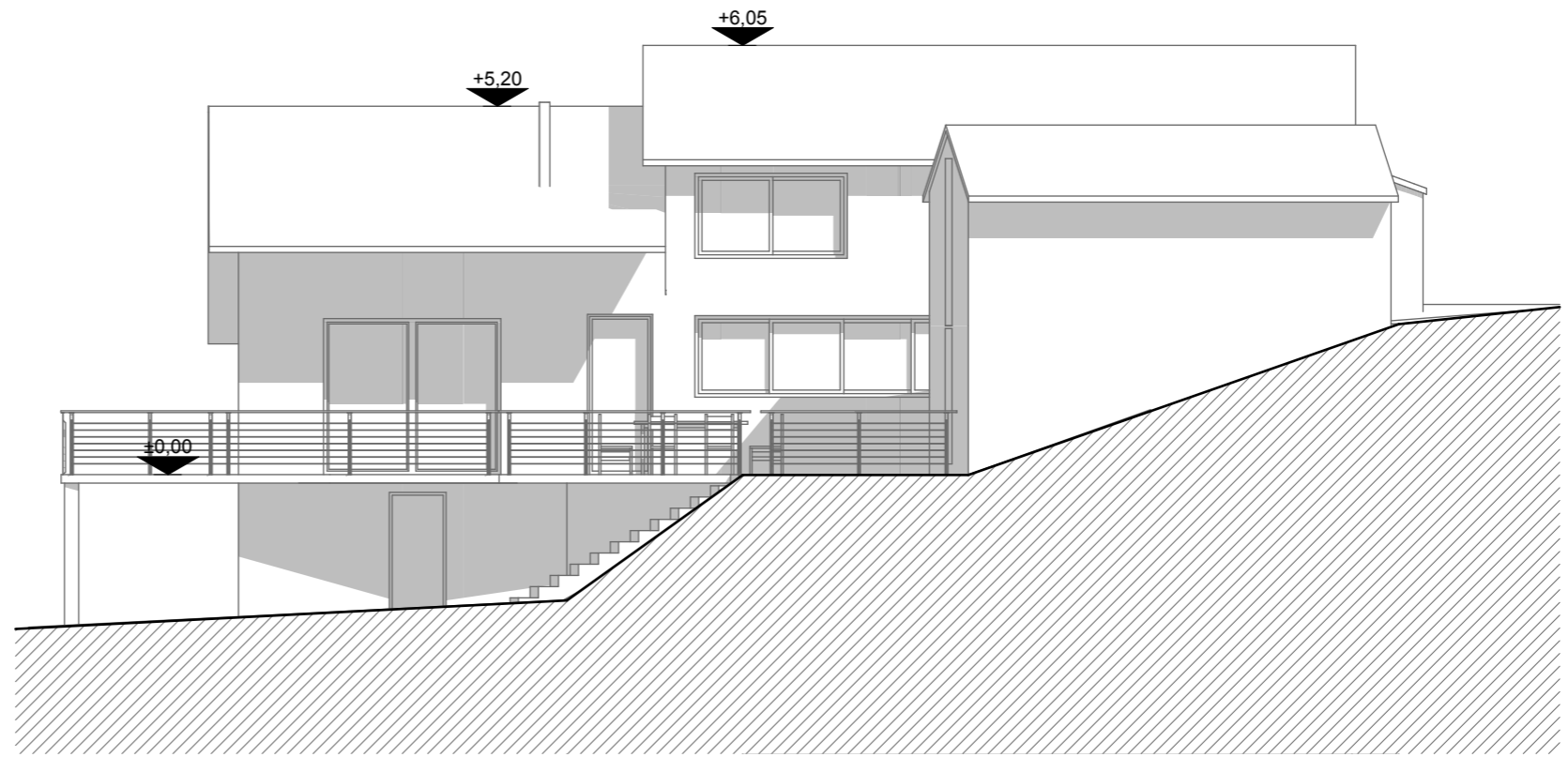
2

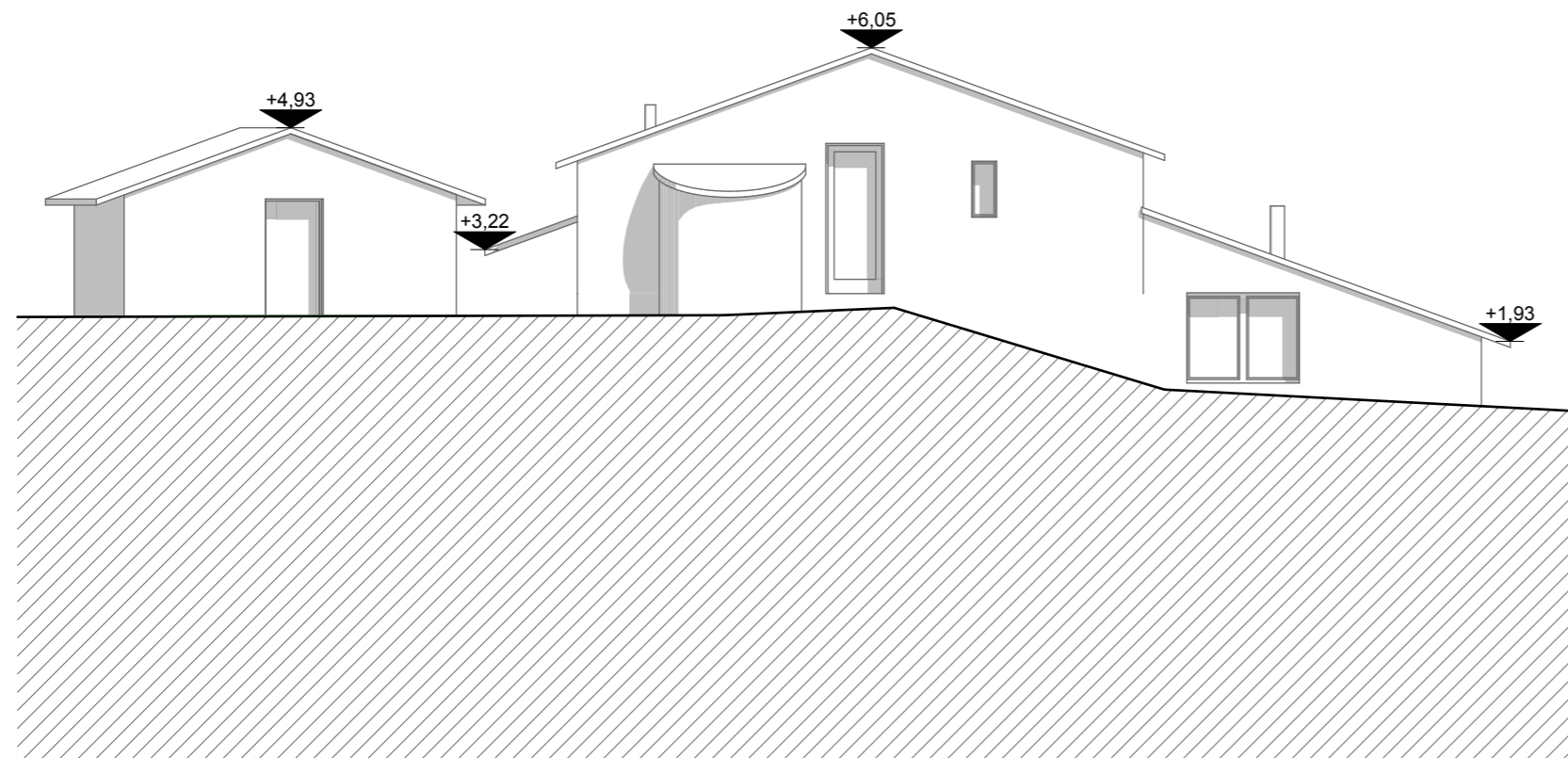
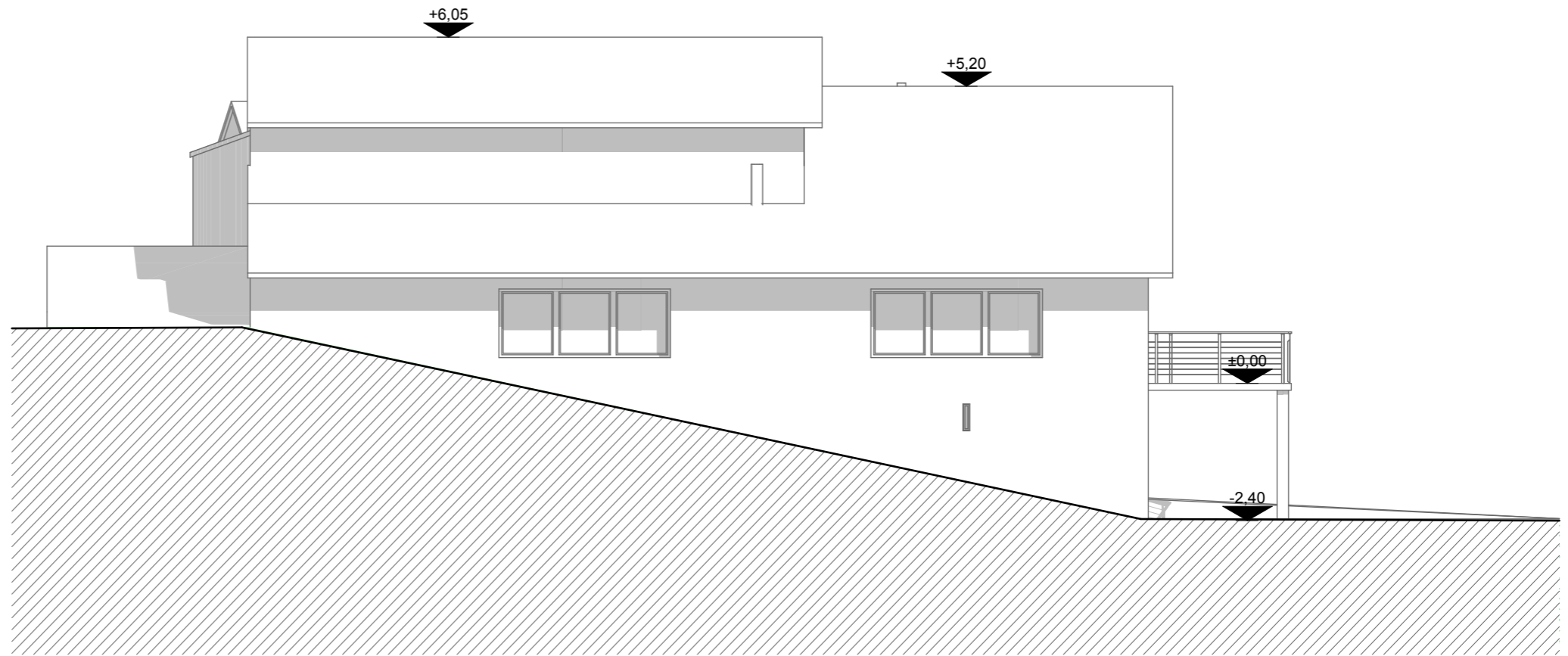


3



4





Façades N&E
Projet - 1/100e (pc5)